

Israel Preparation Final

Lesson # 1

Mapping

-How big is the country of modern Israel (Length and Width)?

-Label the countries around Israel on the map



-Give an example of Western vs Eastern thinking:

Define these terms:

-Mayim:

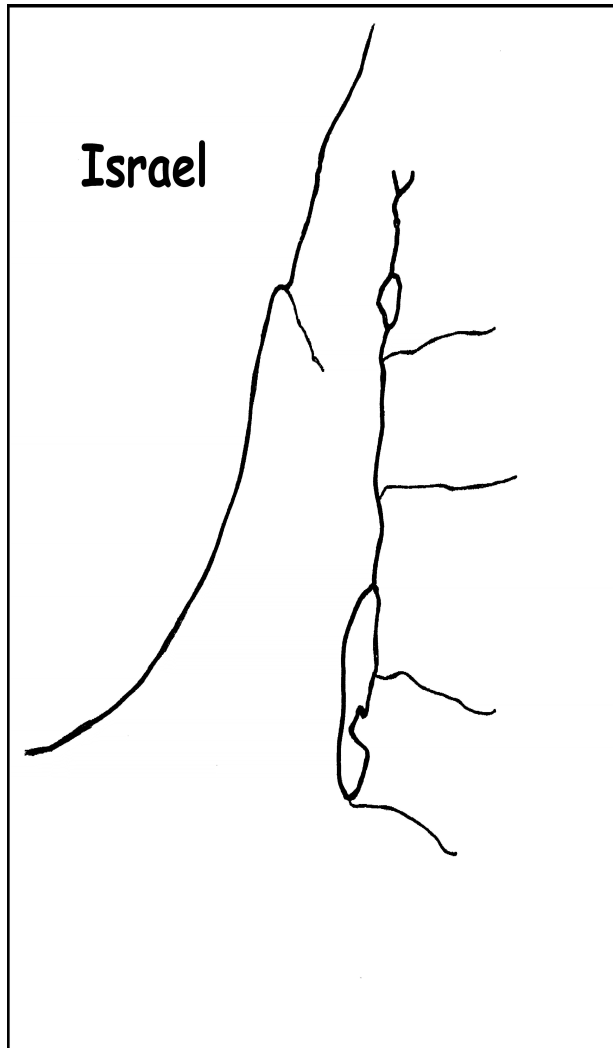
-Shema:

-Nazarite vow

Lesson 2-3

Mapping

-On the map label the 6 regions from the ocean to the Dead Sea with their word associations, Via Maris, Valleys with cities and word associations



Define these terms:

-Bema:

-Gan:

-Gat Shemen:

-Shalom:

-High Place:

-Topeth:

-Kanaf:

-Kippah

-Har:

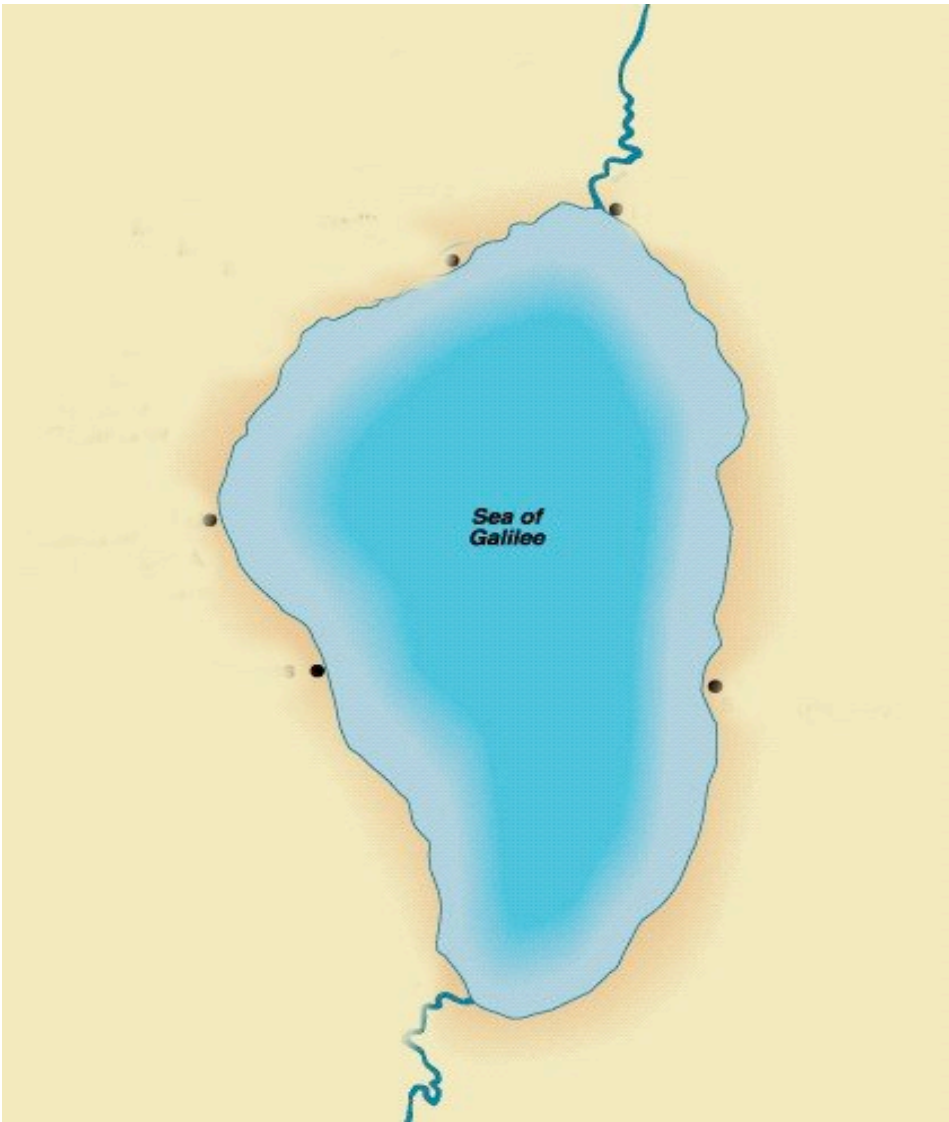
-Boker Tov:

-Layla Tov:

Lesson # 4

Mapping

-Map the cities of Galilee as well as the word associations that go with them:



Define these terms:

-Beseder:

-Ken:

-Lo:

-Menorah:

-Mikveh:

-Remez:

-Humanism:

Lesson # 5

Label the tribes on the map

The image shows a map of the land of Israel, divided into 12 numbered regions. The map is titled "12 Tribes of Israel" in yellow text. The Mediterranean Sea is labeled on the left, and the Jordan River and Dead Sea are labeled in the center. Key locations like Galilee, Jericho, Mt. Nebo, and Jerusalem are marked. A legend on the right lists the numbers 1 through 12. The map is credited to www.Studylight.org, EBibleTeacher.com, and NASA PHOTO.

Twelve Tribes of Israel

1.	7.
2.	8.
3.	9.
4.	10.
5.	11.
6.	12.

-What were the names of Herod's three children and what were their capitol cities?

1.

2.

3.

-Who was Herod the Great and what is he famous for?

Define these terms:

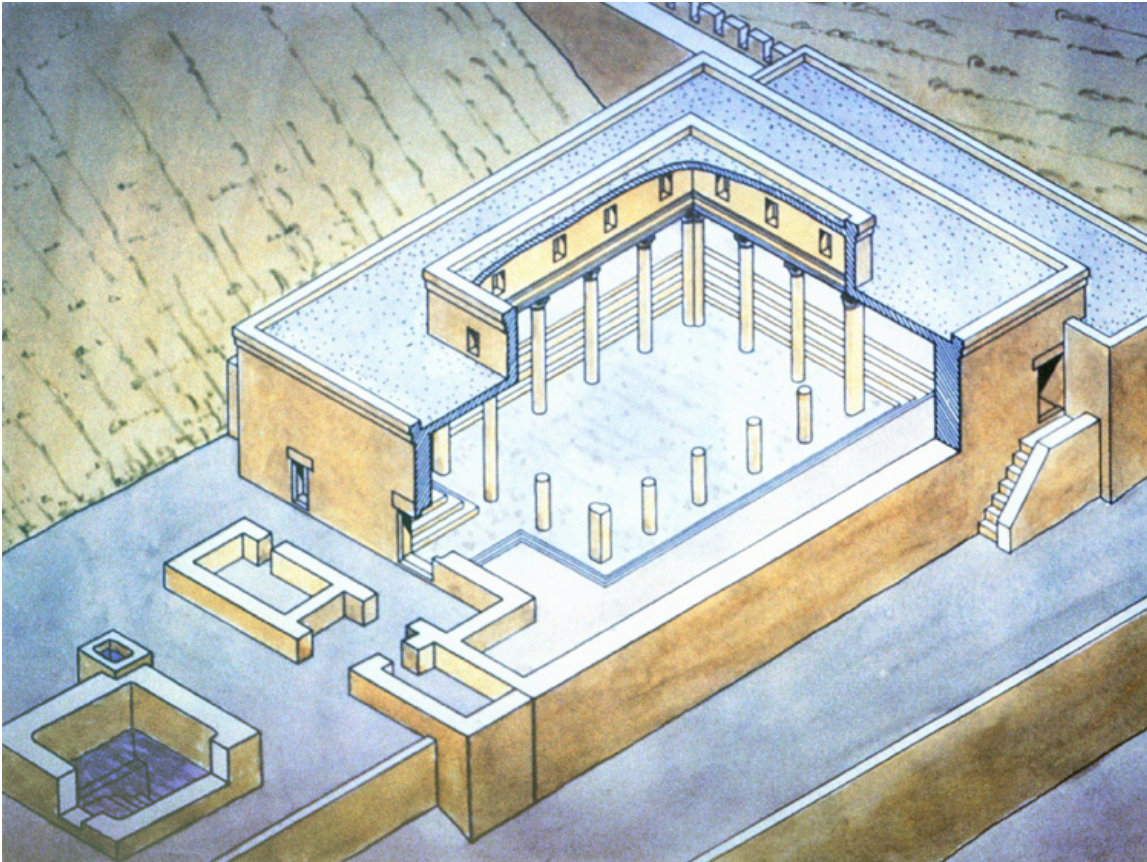
-S'mikheh

-Talmidim

Lesson # 6

Synagogue

-Use the picture below to fill in the parts of a synagogue as well as the order of service.



7 parts of a Synagogue

- 1.
- 2.
- 3.
- 4.
- 5.
- 6.
- 7.

Order of Service

- 1.
- 2.
- 3.
- 4.
- 5.
- 6.
- 7.

Define these terms:

-What does Tanakh stand for?

-Hazzan:

-Aba

-Tzitzit:

-Toda

Lesson # 7

Mapping

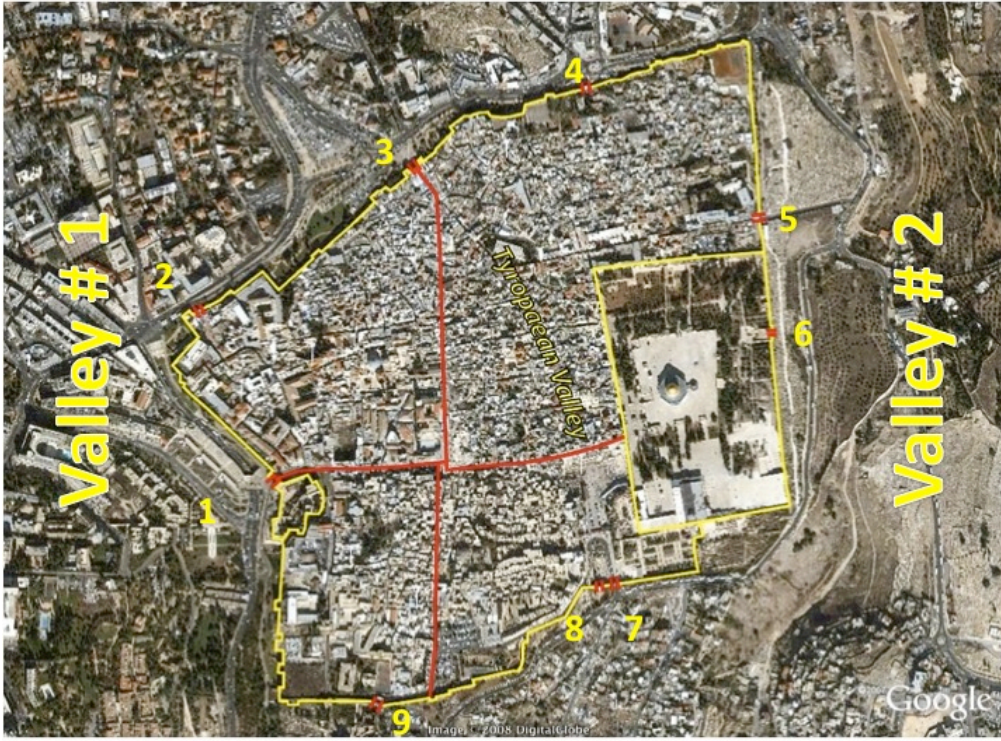
-Label the districts of Jerusalem:



- A.
- B.
- C.
- D.
- E.
- F.
- G.

Mapping

-Label the modern gates, valleys and quarters



Label the gates and valleys

- 1.
- 2.
- 3.
- 4.
- 5.
- 6.
- 7.
- 8.
- 9.

Valley # 1

Valley # 2

Define these terms:

-Ben:

-Ima:

-Recite the Shema